

MONTHLY MEMBERSHIP PROGRESS REPORT

District 33 S

Results as of: 5/31/2025

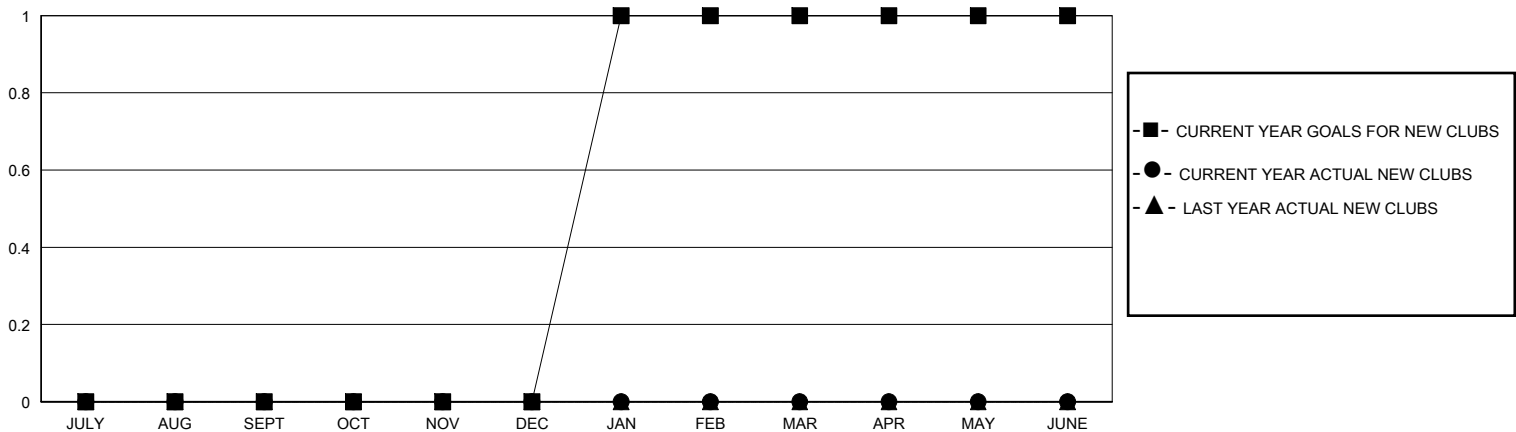
GMT:

LOCATION MASSACHUSETTS

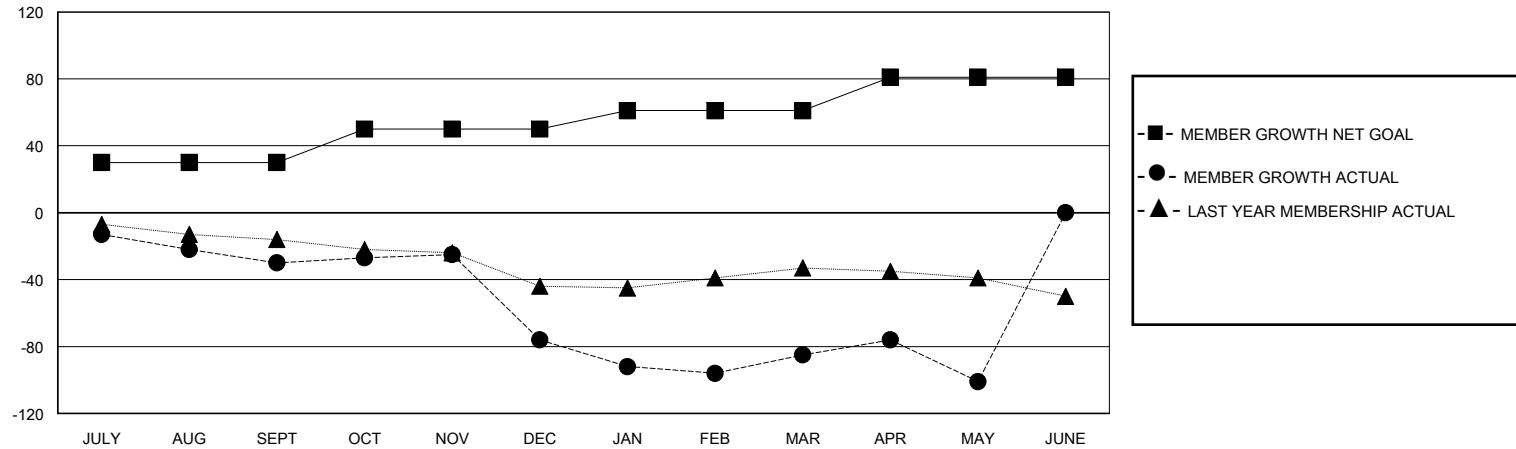
GMT CA

Clubs				Members			
RESULTS FOR 2024-2025				RESULTS FOR 2024-2025			
QUARTER	NEW CLUB GOAL	NEW CLUBS	DROPPED CLUBS	QUARTER	MEMBER GROWTH NET GOAL	MEMBER GROWTH ACTUAL	DROPPED MEMBERS ACTUAL (including transfers)
JULY/AUG/SEPT	0	0	0	JULY/AUG/SEPT	30	19	46
OCT/NOV/DEC	0	0	1	OCT/NOV/DEC	20	33	71
JAN/FEB/MAR	1	0	0	JAN/FEB/MAR	11	55	29
APR/MAY/JUNE	0	0	0	APR/MAY/JUNE	20	33	39

GOALS AND ACTUAL NEW CLUBS CUMULATIVE



GOALS AND ACTUAL MEMBERS CUMULATIVE



DROPPED CLUBS: 1	22 CLUBS OF 46 ADDED 1 OR MORE NEW MEMBERS	<u>GENDER DISTRIBUTION</u> MALE 839 (60.01%) FEMALE 558 (39.91%)
<u>DROPPED MEMBERS</u> DECEASED 24 CLUB CANCELLED 33 OTHER 128 TOTAL 185	CLICK HERE FOR CUMULATIVE MEMBERSHIP DATA	TOTAL FAMILY UNIT MEMBERS 208 FAMILY MEMBERS PAYING HALF DUES 105